



# Emergency Medical Service (EMS) Professions

## EMSP 1130 – Medical Emergencies for the Emergency Medical Technician (EMT)

### COURSE SYLLABUS

#### HYBRID

#### Fall Semester 2019

#### COURSE INFORMATION

Credit Hours/Minutes: 3 / 3000

Campus/Class Location: Health Science Annex West - Room 118

Class Meets: **30% Hybrid / 70% Face-to-Face:** Monday and Thursday 5:45 pm – 10:00.

Course Reference Number (CRN): 20154

Preferred Method of Contact: The preferred method of contact for the instructor is by office phone. If there is no answer, please call the cell phone number provided below.

#### INSTRUCTOR CONTACT INFORMATION

Adjunct Instructor Name: Laurie Holland

Adjunct College Email Address: [Laurie Holland \(lholland@southeasterntech.edu\)](mailto:lholland@southeasterntech.edu)

Campus/Office Location: Health Science Annex West Room 115

Office Hours: By appointment

Phone: 912-538-3218 (office)      912-245-1702 (cell)

Fax Number: 912-538-3259

Full-Time Instructor Name: Jim Jones

Email Address: [Jim Jones \(jjones@southeasterntech.edu\)](mailto:jjones@southeasterntech.edu)

Campus/Office Location: Health Science Annex West Room 109, Vidalia

Office Hours: By appointment (Due to shift friendly schedule)

Phone: 912-538-3218 (office)      912-293-5161 (cell)

Fax Number: 912-538-3259

Tutoring Hours (if applicable): By Appointment

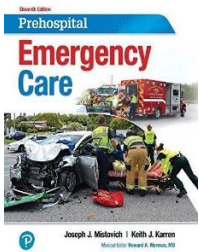
**This course is taught in a hybrid format. Hybrid classes require students to complete a portion of the required contact hours traditionally by attending classes on campus while completing the remaining portion online at the student's convenience with respect to the instructor's requirements.**

#### SOUTHEASTERN TECHNICAL COLLEGE (STC) CATALOG AND HANDBOOK

Students are responsible for all policies and procedures and all other information included in Southeastern Technical College's Catalog and Handbook (<http://www.southeasterntech.edu/student-affairs/catalog-handbook.php>).

## REQUIRED TEXT

*Prehospital Emergency Care 11<sup>th</sup> edition* - Authors: Joseph Mistovich, Keith Karren, ISBN-10: 013-470445-2



## REQUIRED SUPPLIES & SOFTWARE

Note: Although students can use their smart phones and tablets to access their online course(s), exams, discussions, assignments, and other graded activities should be performed on a personal computer. Neither Blackboard nor Georgia Virtual Technical Connection (GVTC) provide technical support for issues relating to the use of a smart phone or tablet so students are advised to not rely on these devices to take an online course.

**Students should not share login credentials with others and should change passwords periodically to maintain security.**

## COURSE DESCRIPTION

This course integrates pathophysiological principles and assessment findings to formulate a field impression and implement the treatment plan of cases involving non-traumatic medical emergencies.

## MAJOR COURSE COMPETENCIES

1. Medical Overview
2. Neurology
3. Abdominal and Gastrointestinal Disorders
4. Immunology
5. Infectious Disease
6. Endocrine Disorders
7. Psychiatric
8. Cardiovascular
9. Toxicology
10. Respiratory
11. Hematology
12. Genitourinary/Renal
13. Non-Traumatic Musculoskeletal Disorders
14. Diseases of the Eyes, Ears, Nose, and Throat
15. Medical Assessments.

## PREREQUISITE(S)

Program Admission

## COURSE OUTLINE

### Medical Overview

| Order | Description   | Learning Domain | Level of Learning |
|-------|---|-----------------|-------------------|
| 1     | Apply fundamental knowledge to provide basic emergency care and transportation based on assessment findings for an acutely ill patient.                             | Cognitive       | Application       |
| 2     | Illustrate the pathophysiology, assessment, and management of various medical complaints including transport mode and destination decisions.                        | Cognitive       | Comprehension     |
| 3     | Demonstrate the assessment and management of various medical complaints to include transport mode, destination decisions, and the pathophysiology of the complaint. | Psychomotor     | Guided Response   |

### Neurology

| Order | Description  | Learning Domain | Level of Learning |
|-------|--|-----------------|-------------------|
| 1     | Demonstrate anatomy, physiology, pathophysiology, assessment and management of the following: decreased level of responsiveness; stroke/ transient ischemic attack; seizure; status epilepticus; and headache. | Cognitive       | Application       |
| 2     | Perform the assessment and management of a patient with a neurologic complaint.  | Psychomotor     | Guided Response   |

### Abdominal and Gastrointestinal Disorders

| Order | Description  | Learning Domain | Level of Learning |
|-------|--|-----------------|-------------------|
| 1     | Demonstrate the anatomy, physiology, pathophysiology, assessment, and management of acute and chronic gastrointestinal hemorrhage. | Cognitive       | Application       |
| 2     | Discuss the anatomy, physiology, pathophysiology, assessment, and management of peritonitis and ulcerative diseases.               | Cognitive       | Comprehension     |
| 3     | Perform the assessment and management of a simulated patient experiencing an abdominal or gastrointestinal disorder.               | Psychomotor     | Guided Response   |

### Immunology

| Order | Description   | Learning Domain | Level of Learning |
|-------|---|-----------------|-------------------|
| 1     | Demonstrate the anatomy, physiology, pathophysiology, assessment, and management of hypersensitivity disorders and/or emergencies (anaphylactic reactions). | Cognitive       | Application       |
| 2     | Perform the assessment and management of a patient experiencing a hypersensitivity reaction (allergy/anaphylaxis).  | Psychomotor     | Guided Response   |

## Infectious Disease

| Order | Description  | Learning Domain | Level of Learning |
|-------|--|-----------------|-------------------|
| 1     | Discuss the assessment and management of a patient who may have an infectious disease.     | Cognitive       | Comprehension     |
| 2     | Describe how to decontaminate the ambulance and equipment after treating a patient.        | Cognitive       | Comprehension     |
| 3     | Encourage the decontamination of equipment after treating a patient.                       | Affective       | Organization      |
| 4     | Demonstrate the assessment and management of a patient who may have an infectious disease. | Psychomotor     | Guided Response   |
| 5     | Consistently display the appropriate use of body substance isolation precautions.          | Affective       | Responding        |

## Endocrine Disorders

| Order | Description   | Learning Domain | Level of Learning |
|-------|---|-----------------|-------------------|
| 1     | Characterize the anatomy, physiology, pathophysiology, assessment and management of acute diabetic emergencies. | Cognitive       | Analysis          |
| 2     | Demonstrate the assessment and management of a patient experiencing a diabetic emergency.                       | Psychomotor     | Guided Response   |

## Psychiatric

| Order | Description  | Learning Domain | Level of Learning |
|-------|--|-----------------|-------------------|
| 1     | Recognize the behaviors that pose a risk to the EMT, patient or others.  | Cognitive       | Analysis          |
| 2     | Describe the basic principles of the mental health system.   | Cognitive       | Comprehension     |
| 3     | Demonstrate the assessment and management of the following: acute psychosis; suicidal/risk; and agitated delirium. | Cognitive       | Application       |
| 4     | Perform the assessment and management of a patient exhibiting a psychiatric emergency.                             | Psychomotor     | Guided Response   |

## Cardiovascular

| Order | Description   | Learning Domain | Level of Learning |
|-------|---|-----------------|-------------------|
| 1     | Identify the anatomy, signs, symptoms and management for cardiac arrest.  | Cognitive       | Knowledge         |
| 2     | Demonstrate knowledge of the anatomy, physiology, pathophysiology, assessment, and management of the following: acute coronary syndrome (including angina pectoris & myocardial infarction); aortic aneurysm/dissection; and thromboembolism. | Cognitive       | Application       |
| 3     | Discuss the anatomy, physiology, pathophysiology, assessment, and management of heart failure and hypertensive emergencies.   | Cognitive       | Comprehension     |

| <b>Order</b> | <b>Description</b>   | <b>Learning Domain</b> | <b>Level of Learning</b> |
|--------------|--|------------------------|--------------------------|
| 4            | Perform the assessment and management of various patients experiencing a cardiovascular emergency. | Psychomotor            | Guided Response          |

### Toxicology

| <b>Order</b> | <b>Description</b>   | <b>Learning Domain</b> | <b>Level of Learning</b> |
|--------------|--|------------------------|--------------------------|
| 1            | Discuss the recognition and treatment of the following: Carbon Monoxide poisoning; Nerve agent poisoning.  | Cognitive              | Comprehension            |
| 2            | State how and when to contact a poison control center.   | Cognitive              | Knowledge                |
| 3            | Demonstrate the anatomy, physiology, pathophysiology, assessment, and management of the following: inhaled poisons; ingested poisons; injected poisons; absorbed poisons; and alcohol intoxication and withdrawal. | Cognitive              | Application              |
| 4            | Perform the assessment and management of a patient experiencing a toxicological emergency.   | Psychomotor            | Guided Response          |

### Respiratory

| <b>Order</b> | <b>Description</b>   | <b>Learning Domain</b> | <b>Level of Learning</b> |
|--------------|--|------------------------|--------------------------|
| 1            | Discuss the anatomy, signs, symptoms and management of respiratory emergencies including those that affect the upper and lower airways.  | Cognitive              | Comprehension            |
| 2            | Demonstrate the anatomy, physiology, pathophysiology, assessment, and management of the following: epiglottitis; spontaneous pneumothorax; pulmonary edema; asthma; chronic obstructive pulmonary disease; environmental/industrial exposure; and toxic gas. | Cognitive              | Application              |
| 3            | Discuss the anatomy, physiology, pathophysiology, assessment, and management of the following: pertussis; cystic fibrosis; pulmonary embolism; pneumonia; and viral respiratory infections.  | Cognitive              | Comprehension            |
| 4            | Perform the assessment and management of various patients experiencing a respiratory emergency.  | Psychomotor            | Guided Response          |

### Hematology

| <b>Order</b> | <b>Description</b>  | <b>Learning Domain</b> | <b>Level of Learning</b> |
|--------------|---|------------------------|--------------------------|
| 1            | Discuss the anatomy, physiology, pathophysiology, assessment, and management of the following: Sickle cell crisis and clotting disorders. | Cognitive              | Comprehension            |
| 2            | Demonstrate the assessment and management of a patient experiencing a hematologic emergency.  | Psychomotor            | Guided Response          |

## Genitourinary/Renal

| Order | Description  | Learning Domain | Level of Learning |
|-------|--|-----------------|-------------------|
| 1     | Describe blood pressure assessment in hemodialysis patients.   | Cognitive       | Comprehension     |
| 2     | Discuss the anatomy, physiology, pathophysiology, assessment, and management of the following: complications related to renal dialysis and urinary catheter management (not insertion); and kidney stones. | Cognitive       | Comprehension     |
| 3     | Demonstrate the assessment and management of a patient experiencing a genitourinary/renal emergency.   | Psychomotor     | Guided Response   |
| 4     | Display empathy for patients experiencing a genitourinary/renal emergency.   | Affective       | Responding        |

## Non-Traumatic Musculoskeletal Disorders

| Order | Description   | Learning Domain | Level of Learning |
|-------|---|-----------------|-------------------|
| 1     | Demonstrate the anatomy, physiology, pathophysiology, assessment and management of non-traumatic fractures. | Cognitive       | Application       |
| 2     | Perform the assessment and management of a patient experiencing a non-traumatic musculoskeletal disorder.   | Psychomotor     | Guided Response   |

## Diseases of the Eyes, Ears, Nose, and Throat

| Order | Description  | Learning Domain | Level of Learning |
|-------|--|-----------------|-------------------|
| 1     | Discuss the recognition and management of nose bleed.                      | Cognitive       | Comprehension     |
| 2     | Demonstrate the recognition and management of a patient with a nose bleed. | Psychomotor     | Guided Response   |

## Medical Assessments

| Order | Description  | Learning Domain | Level of Learning |
|-------|--|-----------------|-------------------|
| 1     | Demonstrate the assessment and management of the following types of medical complaints: neurological; abdominal/gastrointestinal; immunologic; infectious diseases; endocrine disorders; psychiatric; cardiovascular; toxicological; respiratory; hematologic, genitourinary/renal; non-traumatic musculoskeletal disorders; and diseases of the eyes, ears, nose, and throat. | Psychomotor     | Guided Response   |
| 2     | Consider the critical nature of accurate field impressions for patients with various medical complaints.   | Affective       | Valuing           |

## GENERAL EDUCATION CORE COMPETENCIES

STC has identified the following general education core competencies that graduates will attain:

1. The ability to utilize standard written English.
2. The ability to solve practical mathematical problems.
3. The ability to read, analyze, and interpret information.

## STUDENT REQUIREMENTS (HYBRID)

Students are expected to complete all work shown on the attached assignment sheet. Students are also expected to complete all tests and comprehensive problems on the dates specified on the attached calendar. Students are responsible for policies and procedures included in the *STC Catalog*. **EMS Professions program students must earn a minimum grade of C in this course to advance to EMSP 1140.**

### HYBRID ATTENDANCE:

Class attendance is a very important aspect of a student's success. Being absent from class prevents students from receiving the full benefit of a course and interrupts the learning process. Southeastern Technical College considers both tardiness and leaving early as types of absenteeism. Responsibility for class attendance rests with the student. Regular and punctual attendance at all scheduled classes is required for student success. Students will be expected to complete all work required by the instructor as described in the individual course syllabus.

Instructors have the right to give unannounced quizzes/assignments. Students who miss an unannounced quiz or assignment will receive a grade of 0. Students who stop attending class, but do not formally withdraw, may receive a grade of "F" (Failing 0-59) and face financial aid repercussions in upcoming semesters.

Instructors are responsible for determining whether missed work may be made up and the content and dates for makeup work is at the discretion of the instructor.

Attendance is counted from the first scheduled class meeting of each semester. To receive credit for a course a student must attend at least 90% of the scheduled instructional time. All work missed due to tardiness or absences must be made up at the convenience of the instructor. Any student attending less than the required scheduled instructional time (90%) may be dropped from the course as stated below in the Withdrawal Procedure.

Tardy means arriving after the scheduled time for instruction to begin. Early departure means leaving before the end of the scheduled time. Three (3) tardies or early departures equal one (1) absence for the course.

**For this class, which meets 2 days a week for 6 weeks, the maximum number of days a student may miss is 2 days during the semester.**

## STUDENTS WITH DISABILITIES

Students with disabilities who believe that they may need accommodations in this class based on the impact of a disability are encouraged to contact the appropriate campus coordinator to request services.

Swainsboro Campus: [Macy Gay mgay@southeasterntech.edu](mailto:MacyGay.mgay@southeasterntech.edu), 478-289-2274, Building 1, Room 1210

Vidalia Campus: [Helen Thomas hthomas@southeasterntech.edu](mailto:HelenThomas.htthomas@southeasterntech.edu), 912-538-3126, Building A, Room 165

## SPECIFIC ABSENCES

Provisions for Instructional Time missed because of documented absences due to jury duty, military duty, court duty, or required job training will be made at the discretion of the instructor.

## PREGNANCY

Southeastern Technical College does not discriminate on the basis of pregnancy. However, we can offer accommodations to students who are pregnant that need special consideration to successfully complete the course. If you think you will need accommodations due to pregnancy, please make arrangements with the appropriate campus coordinator.

Swainsboro Campus: [Macy Gay mgay@southeasterntech.edu](mailto:MacyGay@southeasterntech.edu), 478-289-2274, Building 1, Room 1210  
Vidalia Campus: [Helen Thomas hthomas@southeasterntech.edu](mailto:HelenThomas@southeasterntech.edu), 912-538-3126, Building A, Room 165

It is strongly encouraged that requests for consideration be made **PRIOR** to delivery and early enough in the pregnancy to ensure that all the required documentation is secured before the absence occurs. Requests made after delivery **MAY NOT** be accommodated. The coordinator will contact your instructor to discuss accommodations when all required documentation has been received. The instructor will then discuss a plan with you to make up missed assignments.

### **WITHDRAWAL PROCEDURE**

Students wishing to officially withdraw from a course(s) or all courses after the drop/add period and prior to the 65% point of the term in which student is enrolled (date will be posted on the school calendar) must speak with a Career Counselor in Student Affairs and complete a Student Withdrawal Form. A grade of "W" (Withdrawn) is assigned for the course(s) when the student completes the withdrawal form.

Students who are dropped from courses due to attendance after drop/add until the 65% point of the semester will receive a "W" for the course.

Important – Student-initiated withdrawals are not allowed after the 65% point. Only instructors can drop students after the 65% point for violating the attendance procedure of the course. Students who are dropped from courses due to attendance after the 65% point will receive either a "WP" (Withdrawn Passing) or "WF" (Withdrawn Failing) for the semester.

Informing your instructor that you will not return to his/her course, does not satisfy the approved withdrawal procedure outlined above.

There is no refund for partial reduction of hours. Withdrawals may affect students' eligibility for financial aid for the current semester and in the future, so a student must also speak with a representative of the Financial Aid Office to determine any financial penalties that may be assessed due to the withdrawal. A grade of "W" will count in attempted hour calculations for the purpose of Financial Aid.

### **MAKEUP GUIDELINES (TESTS, QUIZZES, HOMEWORK, PROJECTS, ETC...)**

If a student misses a test, a grade of zero will be assigned. Only students with extenuating circumstances (who contact the instructor on or before the day of the test regarding their absence) will be allowed to take a makeup test, which will replace the zero. Extenuating circumstances are determined at the instructor's discretion. Unless otherwise scheduled with the instructor, it is expected that the test will be taken prior to the next class, and will be scheduled outside of regular class time. Failure to follow this procedure will result in a grade of zero.

Assignment due dates are listed on the attached lesson schedule and in MyBradyLab. Students are expected to have the assignment completed when it is due. It is within the instructor's discretion to accept or reject late assignments. Any late assignments accepted will be subject to a ten point penalty each day the assignment is late. After three class meetings, no late assignments will be accepted; a zero will be recorded.

Unannounced quizzes are subject to be given on any day. A grade of zero will be assigned for any quizzes missed. There will be no makeup of quizzes.

Any zeros recorded will be included in the final score calculation.



Students must have a 70% or above average on all EMSP 1120 chapter exams to be eligible to sit for the EMSP 1120 final exam. Any student not having a 70% average will not be allowed to take the EMSP 1130 final exam and will not be allowed to advance to EMSP 1140.

### **ACADEMIC DISHONESTY POLICY**

The STC Academic Dishonesty Policy states All forms of academic dishonesty, including but not limited to cheating on tests, plagiarism, collusion, and falsification of information, will call for discipline. The policy can also be found in the STC Catalog and Student Handbook.

### **PROCEDURE FOR ACADEMIC MISCONDUCT**

The procedure for dealing with academic misconduct and dishonesty is as follows:

#### **1. First Offense**

Student will be assigned a grade of "0" for the test or assignment. Instructor keeps a record in course/program files and notes as first offense. The instructor will notify the student's program advisor, academic dean, and the Registrar at the student's home campus. The Registrar will input the incident into Banner for tracking purposes.

#### **2. Second Offense**

Student is given a grade of "WF" for the course in which offense occurs. The instructor will notify the student's program advisor, academic dean, and the Registrar at the student's home campus indicating a "WF" has been issued as a result of second offense. The Registrar will input the incident into Banner for tracking purposes.

#### **3. Third Offense**

Student is given a grade of "WF" for the course in which the offense occurs. The instructor will notify the student's program advisor, academic dean, and the Registrar at the student's home campus indicating a "WF" has been issued as a result of second offense. The Vice President for Student Affairs, or designee, will notify the student of suspension from college for a specified period of time. The Registrar will input the incident into Banner for tracking purposes.

### **STATEMENT OF NON-DISCRIMINATION**

The Technical College System of Georgia (TCSG) and its constituent Technical Colleges do not discriminate on the basis of race, color, creed, national or ethnic origin, gender, religion, disability, age, political affiliation or belief, genetic information, disabled veteran, veteran of the Vietnam Era, spouse of military member, or citizenship status (except in those special circumstances permitted or mandated by law). This nondiscrimination policy encompasses the operation of all technical college-administered programs, federally financed programs, educational programs and activities involving admissions, scholarships and loans, student life, and athletics. It also applies to the recruitment and employment of personnel and contracting for goods and services.

All work and campus environments shall be free from unlawful forms of discrimination, harassment and retaliation as outlined under Title IX of the Educational Amendments of 1972, Title VI and Title VII of the Civil Rights Act of 1964, as amended, the Age Discrimination in Employment Act of 1967, as amended, Executive Order 11246, as amended, the Vietnam Era Veterans Readjustment Act of 1974, as amended, Section 504 of the Rehabilitation Act of 1973, as amended, the Americans With Disabilities Act of 1990, as amended, the Equal Pay Act, Lilly Ledbetter Fair Pay Act of 2009, the Georgia Fair Employment Act of 1978, as amended, the Immigration Reform and Control Act of 1986, the Genetic Information Nondiscrimination Act of 2008, the Workforce Investment Act of 1998 and other related mandates under TCSG Policy, federal or state statutes.

The Technical College System and Technical Colleges shall promote the realization of equal opportunity through a positive continuing program of specific practices designed to ensure the full realization of equal opportunity.

The following individuals have been designated to handle inquiries regarding the nondiscrimination policies:

|  |   |
|--|---|
| <p><b>American With Disabilities Act (ADA)/Section 504 - Equity- Title IX (Students) – Office of Civil Rights (OCR) Compliance Officer</b></p>   | <p><b>Title VI - Title IX (Employees) – Equal Employment Opportunity Commission (EEOC) Officer</b></p>  |
| <p>Helen Thomas, Special Needs Specialist<br/> Vidalia Campus<br/> 3001 East 1<sup>st</sup> Street, Vidalia<br/> Office 165 Phone: 912-538-3126<br/> Email: <a href="mailto:hthomas@southeasterntech.edu">Helen Thomas</a><br/> <a href="mailto:hthomas@southeasterntech.edu">hthomas@southeasterntech.edu</a></p> | <p>Lanie Jonas, Director of Human Resources<br/> Vidalia Campus<br/> 3001 East 1<sup>st</sup> Street, Vidalia<br/> Office 138B Phone: 912-538-3230<br/> Email: <a href="mailto:ljonas@southeasterntech.edu">Lanie Jonas</a><br/> <a href="mailto:ljonas@southeasterntech.edu">ljonas@southeasterntech.edu</a></p> |

**ACCESSIBILITY STATEMENT**

Southeastern Technical College is committed to making course content accessible to individuals to comply with the requirements of Section 508 of the Rehabilitation Act of Americans with Disabilities Act (ADA). If you find a problem that prevents access, please contact the course instructor.

**GRIEVANCE PROCEDURES**

Grievance procedures can be found in the Catalog and Handbook located on Southeastern Technical College’s website.

**ACCESS TO TECHNOLOGY**

Students can now access Blackboard, Remote Lab Access, Student Email, Library Databases (Galileo), and BannerWeb via the mySTC portal or by clicking the Current Students link on the [Southeastern Technical College's Website \(www.southeasterntech.edu\)](http://www.southeasterntech.edu).

**TECHNICAL COLLEGE SYSTEM OF GEORGIA (TCSG) GUARANTEE/WARRANTY STATEMENT**

The Technical College System of Georgia guarantees employers that graduates of State Technical Colleges shall possess skills and knowledge as prescribed by State Curriculum Standards. Should any graduate employee within two years of graduation be deemed lacking in said skills, that student shall be retrained in any State Technical College at no charge for instructional costs to either the student or the employer.

## GRADING POLICY

| Assessment/Assignment        | Percentage |
|------------------------------|------------|
| Chapter Exams                | 50 %       |
| Homework Assignments/Quizzes | 10 %       |
| Affective Learning           | 5 %        |
| Final Exam                   | 35 %       |

## GRADING SCALE

| Letter Grade | Range  |
|--------------|--------|
| A            | 90-100 |
| B            | 80-89  |
| C            | 70-79  |
| D            | 60-69  |
| F            | 0-59   |

# EMSP 1130 CRN# 20154

## Fall Semester 2019 - Lesson Plan

| Date/Week           | Chapter/Lesson  | Content   | Assignments & Tests Due Dates   | Competency Area  |
|---------------------|-----------------|---|---|------------------|
| Monday<br>Oct. 28   | Chapter 16      | In class - Respiratory Emergencies  | Hybrid - Review Chapter 16.<br><b>Chapter 16 Exam next class.</b><br>Complete the Chapter 17 - MyBradyLab assignments before 6:00pm – Oct. 31, 2019   |                  |
| Thursday<br>Oct. 31 | Chapter 17      | <b>In class - Chapter 16 Exam</b><br>In class - Cardiac Emergencies                       | Hybrid - Review Chapter 17. Review the Chapter 17 - MyBradyLab assignments. Be prepared to demonstrate any skills you may have learned regarding Cardiology or Respiratory Emergencies.<br><b>Chapter 17 Exam next class.</b> |                  |
| Monday<br>Nov. 4    | Chapter 16 & 17 | In class - Cardiac and Respiratory Emergencies (Lab)<br><b>In class - Chapter 17 Exam</b> | Hybrid – Read Chapter 18 and complete online assignments before 6:00pm - Nov. 7, 2019.  | *1 & 2<br>**a, c |
| Thursday<br>Nov. 7  | Chapter 18      | In class - Altered Mental Status  | Hybrid - Read Chapter 20 and complete online assignments before 6:00pm - Nov. 11, 2019.<br><b>Chapter 18 Exam next class.</b>   | *4 & 6<br>**a,c  |

| Date/Week           | Chapter/Lesson           | Content  | Assignments & Tests Due Dates   | Competency Area     |
|---------------------|--------------------------|--|---|---------------------|
| Monday<br>Nov. 11   | Chapter 20               | In class – Acute Diabetic Emergencies<br><b>In class - Chapter 18 Exam</b>   | Hybrid - Read Chapters 19 & 21 and complete online assignments before 6:00pm - Nov. 14, 2019.<br><b>Chapter 20 Exam next class.</b>         | *4 & 6<br>**a,b,c   |
| Thursday<br>Nov. 14 | Chapter 19<br>Chapter 21 | <b>In class - Chapter 20 Exam</b><br>In class - Seizures and Syncope<br>In class – Allergic and Anaphylactic Reactions             | Hybrid - Read Chapter 22 & 26 and complete online assignments before 6:00pm - Nov. 18, 2019.<br><b>Chapter 19 &amp; 21 Exam next class.</b> | *7<br>**a,b,c       |
| Monday<br>Nov. 18   | Chapter 22<br>Chapter 26 | <b>In class - Chapter 19 &amp; 21 Exam</b><br>In class - Toxicologic Emergencies<br>In class - Psychiatric Emergencies             | Hybrid - Read Chapters 23 and complete online assignments before 6:00pm - Nov. 21, 2019.<br><b>Chapter 22 &amp; 26 Exam next class.</b>     | *7, 8, 9<br>**a,b,c |
| Thursday<br>Nov. 21 | Chapter 23               | <b>In class - Chapter 22 &amp; 26 Exam</b><br>In class – Abdominal, Hematologic, Gynecologic, Genitourinary, and Renal Emergencies | Hybrid - Read Chapters 24 and complete online assignments before 6:00pm - Nov. 25, 2019.<br><b>Chapter 23 Exam next class.</b>              | *7,8,9<br>**a,b,c   |
| Monday<br>Nov. 25   | Chapter 24               | <b>In class - Chapter 23 Exam</b><br>In class – Environmental Emergencies  | Hybrid – Review all chapters presented this course.<br><b>Chapter 24 Exam next class.</b><br><b>EMSP 1130 Final Exam next class.</b>        | *7,8,9<br>**a,b,c   |

| Date/Week        | Chapter/Lesson | Content  | Assignments & Tests Due Dates   | Competency Area  |
|------------------|----------------|--|---|------------------|
| Monday<br>Dec. 2 | Final Exam     | In class - Chapter 24 Exam<br><br>In class - Review and<br><u>EMSP 1130 Final Exam</u> | Please have all necessary paperwork and fees completed and paid by 1/9/2020 | *1-12<br>**a,b,c |

**\*Competency Areas:**

1. Medical Overview
2. Neurology
3. Abdominal and Gastrointestinal Disorders
4. Immunology
5. Infectious Disease
6. Endocrine Disorders
7. Psychiatric
8. Cardiovascular
9. Toxicology
10. Respiratory
11. Hematology
12. Genitourinary/Renal
13. Non-Traumatic Musculoskeletal Disorders
14. Diseases of the Eyes, Ears, Nose, and Throat
15. Medical Assessments.

**\*\*General Core Educational Competencies**

- a) The ability to utilize standard written English.
- b) The ability to solve practical mathematical problems.
- c) The ability to read, analyze, and interpret information.