



MyBradyLab Course #

**jones29026**



# Emergency Medical Service (EMS) Professions

## EMSP 1130 – **Medical Emergencies for the Emergency Medical Technician (EMT)**

### COURSE SYLLABUS

**HYBRID**

**Fall Semester 2021**

#### **COURSE INFORMATION**

Credit Hours/Minutes: 3 / 3000

Campus/Class Location: Health Science Annex West - Room 118

Class Meets: **30% Hybrid / 70% Face-to-Face**: Monday and Thursday 5:45 pm – 10:00 pm.

Course Reference Number (CRN): 20278

Preferred Method of Contact: The preferred method of contact for the instructor is by office phone. If there is no answer, please call the cell phone number provided below.

#### **INSTRUCTOR CONTACT INFORMATION**

Adjunct Instructor Name: Laurie Holland

Adjunct College Email Address: [Laurie Holland \(lholland@southeasterntech.edu\)](mailto:lholland@southeasterntech.edu)

Campus/Office Location: Health Science Annex West Room 115

Office Hours: By appointment

Phone: 912-538-3218 (office)      912-245-1702 (cell)

Fax Number: 912-538-3259

Full-Time Instructor Name: Jim Jones

Email Address: [Jim Jones \(jjones@southeasterntech.edu\)](mailto:jjones@southeasterntech.edu)

Campus/Office Location: Health Science Annex West Room 109, Vidalia

Office Hours: By appointment (Due to shift friendly schedule)

Phone: 912-538-3218 (office)      912-293-5161 (cell)

Fax Number: 912-538-3259

Tutoring Hours (if applicable): By Appointment

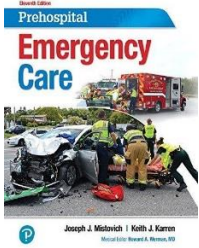
**This course is taught in a hybrid format. Hybrid classes require students to complete a portion of the required contact hours traditionally by attending classes on campus while completing the remaining portion online at the student's convenience with respect to the instructor's requirements.**

#### **SOUTHEASTERN TECHNICAL COLLEGE (STC) CATALOG AND HANDBOOK**

Students are responsible for all policies and procedures and all other information included in Southeastern Technical College's Catalog and Handbook (<http://www.southeasterntech.edu/student-affairs/catalog-handbook.php>).

## REQUIRED TEXT

*Prehospital Emergency Care 11<sup>th</sup> edition* - Authors: Joseph Mistovich, Keith Karren, ISBN-978-0-13-475232-7



## REQUIRED SUPPLIES & SOFTWARE

Note: Although students can use their smart phones and tablets to access their online course(s), exams, discussions, assignments, and other graded activities should be performed on a personal computer. Neither Blackboard nor Georgia Virtual Technical Connection (GVTC) provide technical support for issues relating to the use of a smart phone or tablet so students are advised to not rely on these devices to take an online course.

**Students should not share login credentials with others and should change passwords periodically to maintain security.**

## COURSE DESCRIPTION

This course integrates pathophysiological principles and assessment findings to formulate a field impression and implement the treatment plan of cases involving non-traumatic medical emergencies.

## MAJOR COURSE COMPETENCIES

1. Medical Overview
2. Neurology
3. Abdominal and Gastrointestinal Disorders
4. Immunology
5. Infectious Disease
6. Endocrine Disorders
7. Psychiatric
8. Cardiovascular
9. Toxicology
10. Respiratory
11. Hematology
12. Genitourinary/Renal
13. Non-Traumatic Musculoskeletal Disorders
14. Diseases of the Eyes, Ears, Nose, and Throat
15. Medical Assessments.

## PREREQUISITE(S)

Program Admission

## COURSE OUTLINE

### Medical Overview

Order	Description	Learning Domain	Level of Learning
1	Apply fundamental knowledge to provide basic emergency care and transportation based on assessment findings for an acutely ill patient.	Cognitive	Application
2	Illustrate the pathophysiology, assessment, and management of various medical complaints including transport mode and destination decisions.	Cognitive	Comprehension
3	Demonstrate the assessment and management of various medical complaints to include transport mode, destination decisions, and the pathophysiology of the complaint.	Psychomotor	Guided Response

### Neurology

Order	Description	Learning Domain	Level of Learning
1	Demonstrate anatomy, physiology, pathophysiology, assessment and management of the following: decreased level of responsiveness; stroke/ transient ischemic attack; seizure; status epilepticus; and headache.	Cognitive	Application
2	Perform the assessment and management of a patient with a neurologic complaint.	Psychomotor	Guided Response

### Abdominal and Gastrointestinal Disorders

Order	Description	Learning Domain	Level of Learning
1	Demonstrate the anatomy, physiology, pathophysiology, assessment, and management of acute and chronic gastrointestinal hemorrhage.	Cognitive	Application
2	Discuss the anatomy, physiology, pathophysiology, assessment, and management of peritonitis and ulcerative diseases.	Cognitive	Comprehension
3	Perform the assessment and management of a simulated patient experiencing an abdominal or gastrointestinal disorder.	Psychomotor	Guided Response

### Immunology

Order	Description	Learning Domain	Level of Learning
1	Demonstrate the anatomy, physiology, pathophysiology, assessment, and management of hypersensitivity disorders and/or emergencies (anaphylactic reactions).	Cognitive	Application
2	Perform the assessment and management of a patient experiencing a hypersensitivity reaction (allergy/anaphylaxis).	Psychomotor	Guided Response

## Infectious Disease

Order	Description	Learning Domain	Level of Learning
1	Discuss the assessment and management of a patient who may have an infectious disease.	Cognitive	Comprehension
2	Describe how to decontaminate the ambulance and equipment after treating a patient.	Cognitive	Comprehension
3	Encourage the decontamination of equipment after treating a patient.	Affective	Organization
4	Demonstrate the assessment and management of a patient who may have an infectious disease.	Psychomotor	Guided Response
5	Consistently display the appropriate use of body substance isolation precautions.	Affective	Responding

## Endocrine Disorders

Order	Description	Learning Domain	Level of Learning
1	Characterize the anatomy, physiology, pathophysiology, assessment and management of acute diabetic emergencies.	Cognitive	Analysis
2	Demonstrate the assessment and management of a patient experiencing a diabetic emergency.	Psychomotor	Guided Response

## Psychiatric

Order	Description	Learning Domain	Level of Learning
1	Recognize the behaviors that pose a risk to the EMT, patient or others.	Cognitive	Analysis
2	Describe the basic principles of the mental health system.	Cognitive	Comprehension
3	Demonstrate the assessment and management of the following: acute psychosis; suicidal/risk; and agitated delirium.	Cognitive	Application
4	Perform the assessment and management of a patient exhibiting a psychiatric emergency.	Psychomotor	Guided Response

## Cardiovascular

Order	Description	Learning Domain	Level of Learning
1	Identify the anatomy, signs, symptoms and management for cardiac arrest.	Cognitive	Knowledge
2	Demonstrate knowledge of the anatomy, physiology, pathophysiology, assessment, and management of the following: acute coronary syndrome (including angina pectoris & myocardial infarction); aortic aneurysm/dissection; and thromboembolism.	Cognitive	Application
3	Discuss the anatomy, physiology, pathophysiology, assessment, and management of heart failure and hypertensive emergencies.	Cognitive	Comprehension

<b>Order</b>	<b>Description</b>	<b>Learning Domain</b>	<b>Level of Learning</b>
4	Perform the assessment and management of various patients experiencing a cardiovascular emergency.	Psychomotor	Guided Response

### Toxicology

<b>Order</b>	<b>Description</b>	<b>Learning Domain</b>	<b>Level of Learning</b>
1	Discuss the recognition and treatment of the following: Carbon Monoxide poisoning; Nerve agent poisoning.	Cognitive	Comprehension
2	State how and when to contact a poison control center.	Cognitive	Knowledge
3	Demonstrate the anatomy, physiology, pathophysiology, assessment, and management of the following: inhaled poisons; ingested poisons; injected poisons; absorbed poisons; and alcohol intoxication and withdrawal.	Cognitive	Application
4	Perform the assessment and management of a patient experiencing a toxicological emergency.	Psychomotor	Guided Response

### Respiratory

<b>Order</b>	<b>Description</b>	<b>Learning Domain</b>	<b>Level of Learning</b>
1	Discuss the anatomy, signs, symptoms and management of respiratory emergencies including those that affect the upper and lower airways.	Cognitive	Comprehension
2	Demonstrate the anatomy, physiology, pathophysiology, assessment, and management of the following: epiglottitis; spontaneous pneumothorax; pulmonary edema; asthma; chronic obstructive pulmonary disease; environmental/industrial exposure; and toxic gas.	Cognitive	Application
3	Discuss the anatomy, physiology, pathophysiology, assessment, and management of the following: pertussis; cystic fibrosis; pulmonary embolism; pneumonia; and viral respiratory infections.	Cognitive	Comprehension
4	Perform the assessment and management of various patients experiencing a respiratory emergency.	Psychomotor	Guided Response

### Hematology

<b>Order</b>	<b>Description</b>	<b>Learning Domain</b>	<b>Level of Learning</b>
1	Discuss the anatomy, physiology, pathophysiology, assessment, and management of the following: Sick cell crisis and clotting disorders.	Cognitive	Comprehension
2	Demonstrate the assessment and management of a patient experiencing a hematologic emergency.	Psychomotor	Guided Response

## Genitourinary/Renal

Order	Description	Learning Domain	Level of Learning
1	Describe blood pressure assessment in hemodialysis patients.	Cognitive	Comprehension
2	Discuss the anatomy, physiology, pathophysiology, assessment, and management of the following: complications related to renal dialysis and urinary catheter management (not insertion); and kidney stones.	Cognitive	Comprehension
3	Demonstrate the assessment and management of a patient experiencing a genitourinary/renal emergency.	Psychomotor	Guided Response
4	Display empathy for patients experiencing a genitourinary/renal emergency.	Affective	Responding

## Non-Traumatic Musculoskeletal Disorders

Order	Description	Learning Domain	Level of Learning
1	Demonstrate the anatomy, physiology, pathophysiology, assessment and management of non-traumatic fractures.	Cognitive	Application
2	Perform the assessment and management of a patient experiencing a non-traumatic musculoskeletal disorder.	Psychomotor	Guided Response

## Diseases of the Eyes, Ears, Nose, and Throat

Order	Description	Learning Domain	Level of Learning
1	Discuss the recognition and management of nose bleed.	Cognitive	Comprehension
2	Demonstrate the recognition and management of a patient with a nose bleed.	Psychomotor	Guided Response

## Medical Assessments

Order	Description	Learning Domain	Level of Learning
1	Demonstrate the assessment and management of the following types of medical complaints: neurological; abdominal/gastrointestinal; immunologic; infectious diseases; endocrine disorders; psychiatric; cardiovascular; toxicological; respiratory; hematologic, genitourinary/renal; non-traumatic musculoskeletal disorders; and diseases of the eyes, ears, nose, and throat.	Psychomotor	Guided Response
2	Consider the critical nature of accurate field impressions for patients with various medical complaints.	Affective	Valuing

## GENERAL EDUCATION CORE COMPETENCIES

STC has identified the following general education core competencies that graduates will attain:

1. The ability to utilize standard written English.
2. The ability to solve practical mathematical problems.
3. The ability to read, analyze, and interpret information.

## STUDENT REQUIREMENTS (HYBRID)

Students are expected to complete all work shown on the attached assignment sheet. Students are also expected to complete all tests and comprehensive problems on the dates specified on the attached calendar. Students are responsible for policies and procedures included in the *STC Catalog*. **EMS Professions program students must earn a minimum grade of C in this course to advance to EMSP 1140.**

## COVID-19 MASK REQUIREMENT

Regardless of vaccination status, masks or face coverings must be worn at all times while in a classroom or lab of Southeastern Technical College. This measure is being implemented to reduce COVID-19 related health risks for everyone engaged in the educational process. Masks or face coverings must be worn over the nose and mouth, in accordance with the Centers for Disease Control and Prevention (CDC). A student's refusal to wear a mask or face covering will be considered a classroom disruption and the student may be asked to leave campus and/or receive further discipline.

## COVID-19 SIGNS AND SYMPTOMS

We encourage individuals to monitor for the signs and symptoms of COVID-19 prior to coming on campus.

If you have experienced the symptoms listed below or have a body temperature 100.4°F or higher, we encourage you to self-quarantine at home and contact a primary care physician's office, local urgent care facility, or health department for further direction. Please notify your instructor(s) by email and do not come on campus for any reason.

COVID-19 Key Symptoms
Fever or felt feverish
Chills
Shortness of breath or difficulty breathing (not attributed to any other health condition)
Cough: new or worsening, not attributed to another health condition
Fatigue
Muscle or body aches
Headache
New loss of taste or smell
Sore throat (not attributed to any other health condition)
Congestion or runny nose (not attributed to any other health condition)
Nausea or vomiting
Diarrhea
<b>In the past 14 days, if you:</b>
Have had close contact with or are caring for an individual diagnosed with COVID-19 at home (not in healthcare setting), please do not come on campus and contact your instructor (s).

## COVID-19 SELF-REPORTING REQUIREMENT

Students, regardless of vaccination status, who test positive for COVID-19 or who have been exposed to a COVID-19 positive person, are required to self-report using <https://www.southeasterntech.edu/covid-19/>. Report all positive cases of COVID-19 to your instructor and [Stephannie Waters](mailto:swaters@southeasterntech.edu), Exposure Control Coordinator, [swaters@southeasterntech.edu](mailto:swaters@southeasterntech.edu), 912-538-3195.

## HYBRID ATTENDANCE:

Class attendance is a very important aspect of a student's success. Being absent from class prevents students from receiving the full benefit of a course and interrupts the learning process. Southeastern Technical College considers both tardiness and leaving early as types of absenteeism. Responsibility for class attendance rests with the student. Regular and punctual attendance at all scheduled classes is required for student success. Students will be expected to complete all work required by the instructor as described in the individual course syllabus.

Instructors have the right to give unannounced quizzes/assignments. Students who miss an unannounced quiz or assignment will receive a grade of 0. Students who stop attending class, but do not formally withdraw, may receive a grade of "F" (Failing 0-59) and face financial aid repercussions in upcoming semesters.

Instructors are responsible for determining whether missed work may be made up and the content and dates for makeup work is at the discretion of the instructor.

Attendance is counted from the first scheduled class meeting of each semester. To receive credit for a course a student must attend at least 90% of the scheduled instructional time. All work missed due to tardiness or absences must be made up at the convenience of the instructor. Any student attending less than the required scheduled instructional time (90%) may be dropped from the course as stated below in the Withdrawal Procedure.

Tardy means arriving after the scheduled time for instruction to begin. Early departure means leaving before the end of the scheduled time. Three (3) tardies or early departures equal one (1) absence for the course.

**For this class, which meets 2 days a week for 5 weeks, the maximum number of days a student may miss is 1 day during the semester.**

## STUDENTS WITH DISABILITIES

Students with disabilities who believe that they may need accommodations in this class based on the impact of a disability are encouraged to contact the appropriate campus coordinator to request services.

Swainsboro Campus: [Daphne Scott](mailto:dscott@southeasterntech.edu) ([dscott@southeasterntech.edu](mailto:dscott@southeasterntech.edu)) 478-289-2274, Building 1, Room 1210.

Vidalia Campus: [Helen Thomas](mailto:hthomas@southeasterntech.edu) ([hthomas@southeasterntech.edu](mailto:hthomas@southeasterntech.edu)), 912-538-3126, Building A, Room 165.

## SPECIFIC ABSENCES

Provisions for Instructional Time missed because of documented absences due to jury duty, military duty, court duty, or required job training will be made at the discretion of the instructor.

## PREGNANCY

Southeastern Technical College does not discriminate on the basis of pregnancy. However, we can offer accommodations to students who are pregnant that need special consideration to successfully complete the



course. If you think you will need accommodations due to pregnancy, please make arrangements with the appropriate campus coordinator.

Swainsboro Campus: [Daphne Scott \(dscott@southeasterntech.edu\)](mailto:dscott@southeasterntech.edu) 478478-289-2274, Building 1, Room 1210.  
Vidalia Campus: [Helen Thomas \(hthomas@southeasterntech.edu\)](mailto:hthomas@southeasterntech.edu), 912-538-3126, Building A, Room 165.

It is strongly encouraged that requests for consideration be made **PRIOR** to delivery and early enough in the pregnancy to ensure that all the required documentation is secured before the absence occurs. Requests made after delivery MAY NOT be accommodated. The coordinator will contact your instructor to discuss accommodations when all required documentation has been received. The instructor will then discuss a plan with you to make up missed assignments.

### **WITHDRAWAL PROCEDURE**

Students wishing to officially withdraw from a course(s) or all courses after the drop/add period and prior to the 65% point of the term in which student is enrolled (date will be posted on the school calendar) must speak with a Career Counselor in Student Affairs and complete a Student Withdrawal Form. A grade of “W” (Withdrawn) is assigned for the course(s) when the student completes the withdrawal form.

Students who are dropped from courses due to attendance after drop/add until the 65% point of the semester will receive a “W” for the course.

Important – Student-initiated withdrawals are not allowed after the 65% point. Only instructors can drop students after the 65% point for violating the attendance procedure of the course. Students who are dropped from courses due to attendance after the 65% point will receive either a “WP” (Withdrawn Passing) or “WF” (Withdrawn Failing) for the semester.

Informing your instructor that you will not return to his/her course, does not satisfy the approved withdrawal procedure outlined above.

There is no refund for partial reduction of hours. Withdrawals may affect students’ eligibility for financial aid for the current semester and in the future, so a student must also speak with a representative of the Financial Aid Office to determine any financial penalties that may be assessed due to the withdrawal. A grade of “W” will count in attempted hour calculations for the purpose of Financial Aid.

**WORK ETHICS:** The Technical College System of Georgia (TCSG) instructs and evaluates students on work ethics in all programs of study. Ten work ethics traits have been identified and defined as essential for student success: appearance, attendance, attitude, character, communication, cooperation, organizational skills, productivity, respect, and teamwork. Students will be required to take a work ethics exam as marked in the lesson plan. A grade of 70 or better is required to complete the work ethics requirements for this class.

### **MAKEUP GUIDELINES (TESTS, QUIZZES, HOMEWORK, PROJECTS, ETC...)**

If a student misses a test, a grade of zero will be assigned. Only students with extenuating circumstances (who contact the instructor on or before the day of the test regarding their absence) will be allowed to take a makeup test, which will replace the zero. Extenuating circumstances are determined at the instructor’s discretion. Unless otherwise scheduled with the instructor, it is expected that the test will be taken prior to the next class, scheduled outside of regular class time. Failure to follow this procedure will result in a grade of zero.

Assignment due dates are listed on the attached lesson schedule. Students are expected to have the assignment completed at the beginning of class on the date that it is due. It is within the instructor’s

discretion to accept or reject late assignments. Any late assignments accepted will be subject to a ten point penalty each day the assignment is late. After three class meetings, no late assignments will be accepted; a zero will be recorded.

Unannounced quizzes are subject to be given on any day. A grade of zero will be assigned for any quizzes missed. There will be no makeup of quizzes.

Any zeros recorded will be included in the final score calculation.

Students must have a 70% or above average on all chapter exams AND a 70% or above average on all homework assignments to be eligible to sit for the final exam of each class. Any student not meeting this requirement will not be allowed to take the class final exam and will not be allowed to advance to the next scheduled class.

**IMPORTANT:** Upon the successful completion of EMSP 1140, students will be eligible to sit for the EMT Comprehensive Final exam. Upon the successful completion of the EMT comprehensive Final exam, students will be eligible to sit for the NREMT EMT comprehensive written and practical exams. Students are encouraged to take the NREMT EMT exam as soon as possible. Students **MUST** complete at least one full attempt of both the NREMT EMT comprehensive written and practical exam prior to beginning EMSP 1520, scheduled to begin Spring semester.

Students must score a 70% or better on a comprehensive written examination at the end of the course to be eligible to sit for the NREMT- EMT and Advanced EMT exams. A score of 69.9% will not be rounded up.

### **ACADEMIC DISHONESTY POLICY**

The STC Academic Dishonesty Policy states All forms of academic dishonesty, including but not limited to cheating on tests, plagiarism, collusion, and falsification of information, will call for discipline. The policy can also be found in the STC Catalog and Student Handbook.

### **PROCEDURE FOR ACADEMIC MISCONDUCT**

The procedure for dealing with academic misconduct and dishonesty is as follows:

#### **1. First Offense**

Student will be assigned a grade of "0" for the test or assignment. Instructor keeps a record in course/program files and notes as first offense. The instructor will notify the student's program advisor, academic dean, and the Registrar at the student's home campus. The Registrar will input the incident into Banner for tracking purposes.

#### **2. Second Offense**

Student is given a grade of "WF" (Withdrawn Failing) for the course in which offense occurs. The instructor will notify the student's program advisor, academic dean, and the Registrar at the student's home campus indicating a "WF" has been issued as a result of second offense. The Registrar will input the incident into Banner for tracking purposes.

#### **3. Third Offense**

Student is given a grade of "WF" for the course in which the offense occurs. The instructor will notify the student's program advisor, academic dean, and the Registrar at the student's home campus indicating a "WF" has been issued as a result of second offense. The Vice President for Student Affairs, or designee, will notify the student of suspension from college for a specified period of time. The Registrar will input the incident into Banner for tracking purposes.

## STATEMENT OF NON-DISCRIMINATION

The Technical College System of Georgia (TCSG) and its constituent Technical Colleges do not discriminate on the basis of race, color, creed, national or ethnic origin, gender, religion, disability, age, political affiliation or belief, genetic information, disabled veteran, veteran of the Vietnam Era, spouse of military member, or citizenship status (except in those special circumstances permitted or mandated by law). This nondiscrimination policy encompasses the operation of all technical college-administered programs, federally financed programs, educational programs and activities involving admissions, scholarships and loans, student life, and athletics. It also applies to the recruitment and employment of personnel and contracting for goods and services.

All work and campus environments shall be free from unlawful forms of discrimination, harassment and retaliation as outlined under Title IX of the Educational Amendments of 1972, Title VI and Title VII of the Civil Rights Act of 1964, as amended, the Age Discrimination in Employment Act of 1967, as amended, Executive Order 11246, as amended, the Vietnam Era Veterans Readjustment Act of 1974, as amended, Section 504 of the Rehabilitation Act of 1973, as amended, the Americans With Disabilities Act of 1990, as amended, the Equal Pay Act, Lilly Ledbetter Fair Pay Act of 2009, the Georgia Fair Employment Act of 1978, as amended, the Immigration Reform and Control Act of 1986, the Genetic Information Nondiscrimination Act of 2008, the Workforce Investment Act of 1998 and other related mandates under TCSG Policy, federal or state statutes.

The Technical College System and Technical Colleges shall promote the realization of equal opportunity through a positive continuing program of specific practices designed to ensure the full realization of equal opportunity.

The following individuals have been designated to handle inquiries regarding the nondiscrimination policies:

<b>American With Disabilities Act (ADA)/Section 504 - Equity- Title IX (Students) – Office of Civil Rights (OCR) Compliance Officer</b>	<b>Title VI - Title IX (Employees) – Equal Employment Opportunity Commission (EEOC) Officer</b>
Helen Thomas, Special Needs Specialist Vidalia Campus 3001 East 1 <sup>st</sup> Street, Vidalia Office 165 Phone: 912-538-3126 Email: <a href="mailto:hthomas@southeasterntech.edu">Helen Thomas</a> <a href="mailto:hthomas@southeasterntech.edu">hthomas@southeasterntech.edu</a>	Lanie Jonas, Director of Human Resources Vidalia Campus 3001 East 1 <sup>st</sup> Street, Vidalia Office 138B Phone: 912-538-3230 Email: <a href="mailto:ljonas@southeasterntech.edu">Lanie Jonas</a> <a href="mailto:ljonas@southeasterntech.edu">ljonas@southeasterntech.edu</a>

## ACCESSIBILITY STATEMENT

Southeastern Technical College is committed to making course content accessible to individuals to comply with the requirements of Section 508 of the Rehabilitation Act of Americans with Disabilities Act (ADA). If you find a problem that prevents access, please contact the course instructor.

## GRIEVANCE PROCEDURES

Grievance procedures can be found in the Catalog and Handbook located on Southeastern Technical College's website.

## ACCESS TO TECHNOLOGY

Students can now access Blackboard, Remote Lab Access, Student Email, Library Databases (Galileo), and BannerWeb via the mySTC portal or by clicking the Current Students link on the [Southeastern Technical College's Website \(www.southeasterntech.edu\)](http://www.southeasterntech.edu).

## TECHNICAL COLLEGE SYSTEM OF GEORGIA (TCSG) GUARANTEE/WARRANTY STATEMENT

The Technical College System of Georgia guarantees employers that graduates of State Technical Colleges shall possess skills and knowledge as prescribed by State Curriculum Standards. Should any graduate employee within two years of graduation be deemed lacking in said skills, that student shall be retrained in any State Technical College at no charge for instructional costs to either the student or the employer.

### GRADING POLICY

Assessment/Assignment	Percentage
Chapter Exams	40 %
Homework Assignments/Quizzes	15 %
Affective Learning	5 %
Final Exam	40 %
<b>TOTAL</b>	<b>100%</b>

### GRADING SCALE

Letter Grade	Range
A	90-100
B	80-89
C	70-79
D	60-69
F	0-59

# EMSP 1130 - CRN 20278

## Fall Semester 2021 - Lesson Plan

Date/Week	Chapter/Lesson	Content	Assignments & Tests Due Dates	Competency Area
Thursday Oct. 28	Chapter 16	In class - Respiratory Emergencies	Hybrid - Review Chapter 16. <b>Chapter 16 Exam next class.</b> Complete the Chapter 17 - MyBradyLab assignments before 6:00pm – Nov. 1, 2021	
Monday Nov. 1	Chapter 17	<b>In class - Chapter 16 Exam</b> In class - Cardiac Emergencies	Hybrid - Review Chapter 17. Review the Chapter 17 - MyBradyLab assignments. Be prepared to demonstrate any skills you may have learned regarding Cardiology or Respiratory Emergencies. <b>Chapter 17 Exam next class.</b>	
Thursday Nov. 4	Chapter 16 & 17	In class - Cardiac and Respiratory Emergencies (Lab) <b>In class - Chapter 17 Exam</b>	Hybrid – Read Chapter 18 and complete online assignments before 6:00pm - Nov. 8, 2021.	*1 & 2 **a, c
Monday Nov. 8	Chapter 18	In class - Altered Mental Status	Hybrid - Read Chapter 20 and complete online assignments before 6:00pm - Nov. 11, 2021. <b>Chapter 18 Exam next class.</b>	*4 & 6 **a,c

Date/Week	Chapter/Lesson	Content	Assignments & Tests Due Dates	Competency Area
Thursday Nov. 11	Chapter 20	In class – Acute Diabetic Emergencies <b>In class - Chapter 18 Exam</b>	Hybrid - Read Chapters 19 & 21 and complete online assignments before 6:00pm - Nov. 15, 2021. <b>Chapter 20 Exam next class.</b>	*4 & 6 **a,b,c
Monday Nov. 15	Chapter 19 Chapter 21	<b>In class - Chapter 20 Exam</b> In class - Seizures and Syncope In class – Allergic and Anaphylactic Reactions	Hybrid - Read Chapters 22 & 26 and complete online assignments before 6:00pm - Nov. 18, 2021. <b>Chapter 19 &amp; 21 Exam next class.</b>	*7 **a,b,c
Thursday Nov. 18	Chapter 22 Chapter 26	<b>In class - Chapter 19 &amp; 21 Exam</b> In class - Toxicologic Emergencies In class - Psychiatric Emergencies	Hybrid - Read Chapter 23 and complete online assignments before 6:00pm - Nov. 22, 2021. <b>Chapter 22 &amp; 26 Exam next class.</b>	*7, 8, 9 **a,b,c
Monday Nov. 22	Chapter 23	<b>In class - Chapter 22 &amp; 26 Exam</b> In class – Abdominal, Hematologic, Gynecologic, Genitourinary, and Renal Emergencies	Hybrid - Read Chapter 24 and complete online assignments before 6:00pm - Nov. 29, 2021. <b>Chapter 23 Exam next class.</b>	*7,8,9 **a,b,c
Monday Nov. 29	Chapter 24	<b>In class - Chapter 23 Exam</b> In class – Environmental Emergencies	Hybrid – Review all chapters presented this course. <b>Chapter 24 Exam next class.</b> <b>EMSP 1130 Final Exam next class.</b>	*7,8,9 **a,b,c

Date/Week	Chapter/Lesson	Content	Assignments & Tests Due Dates	Competency Area
Thursday Dec. 2	Final Exam	<p>In class - Chapter 24 Exam</p> <p>In class - Review and <u>EMSP 1130 Final Exam</u></p>	<p>Please have all necessary paperwork and fees completed and paid by 1/24/2022</p>	<p>*1-12 **a,b,c</p>

**\*Competency Areas:**

1. Medical Overview
2. Neurology
3. Abdominal and Gastrointestinal Disorders
4. Immunology
5. Infectious Disease
6. Endocrine Disorders
7. Psychiatric
8. Cardiovascular
9. Toxicology
10. Respiratory
11. Hematology
12. Genitourinary/Renal
13. Non-Traumatic Musculoskeletal Disorders
14. Diseases of the Eyes, Ears, Nose, and Throat
15. Medical Assessments.

**\*\*General Core Educational Competencies**

- a) The ability to utilize standard written English.
- b) The ability to solve practical mathematical problems.
- c) The ability to read, analyze, and interpret information.