

ExamView®: Installation for Windows

ExamView by Turning Technologies is the test-generating software Elsevier provides for making tests outside of the Evolve LMS (such as making paper tests using the Test Banks found in your Instructor Resources) or to use for converting the Test Banks for use with other LMS's.

NOTE: Depending on your computer's settings, you may need to contact your Administrator or IT department for permission to install ExamView.

NOTE: As Turning Technologies' ExamView is third-party software, Evolve Support cannot retrieve or generate login credentials for it. Please go to Turning Technologies' support page at turning.force.com/support/s/contactsupport for help with those issues.

NOTE: ExamView has a limit of 250 questions per assessment. Any larger assessment must be split into two or more separate assessments.

1. The **ExamView** desktop application is available to download for most **Evolve resources and courses.**

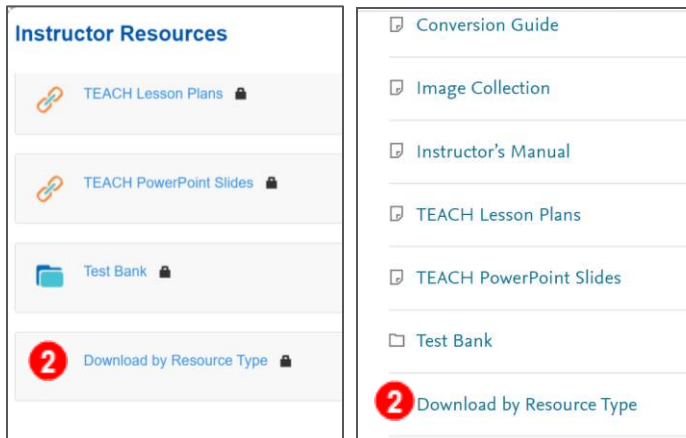


Evolve Resources for The Language of Medicine, 12th Edition
Resources
COURSE ID 160058_instructorpam_1001
INSTRUCTOR Instructor Evolve

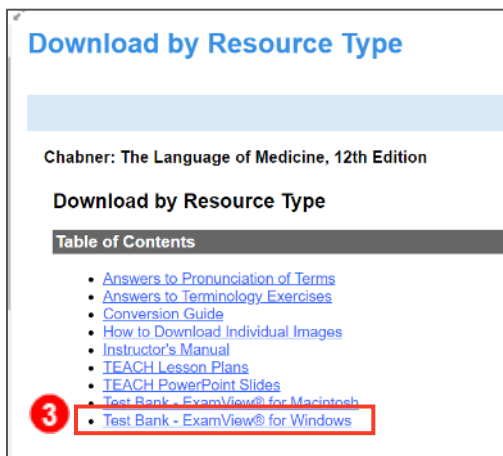


Evolve Resources for The Language of Medicine, 12th Edition
Resources - Content Library

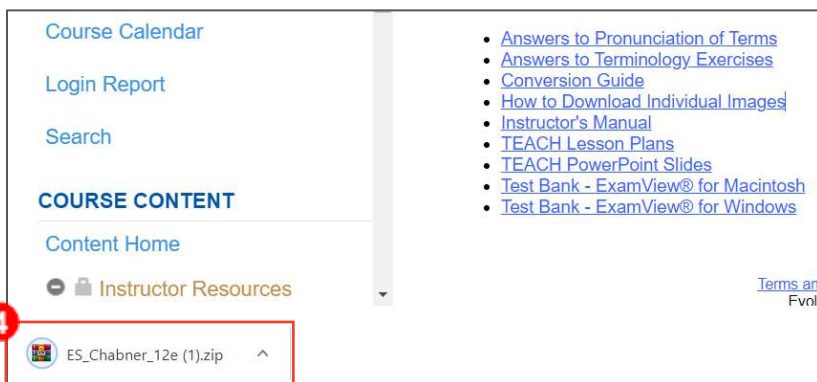
- The **installation file** (which includes your test banks) is typically found in the **Instructor Resources** folder in the **Download** or **Download by Resource Type** section.



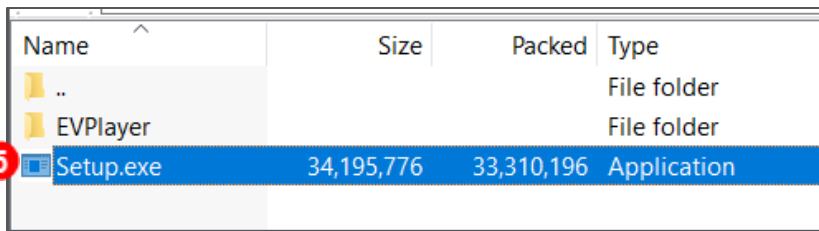
- Click to download the **Test Bank – ExamView® for Windows**.



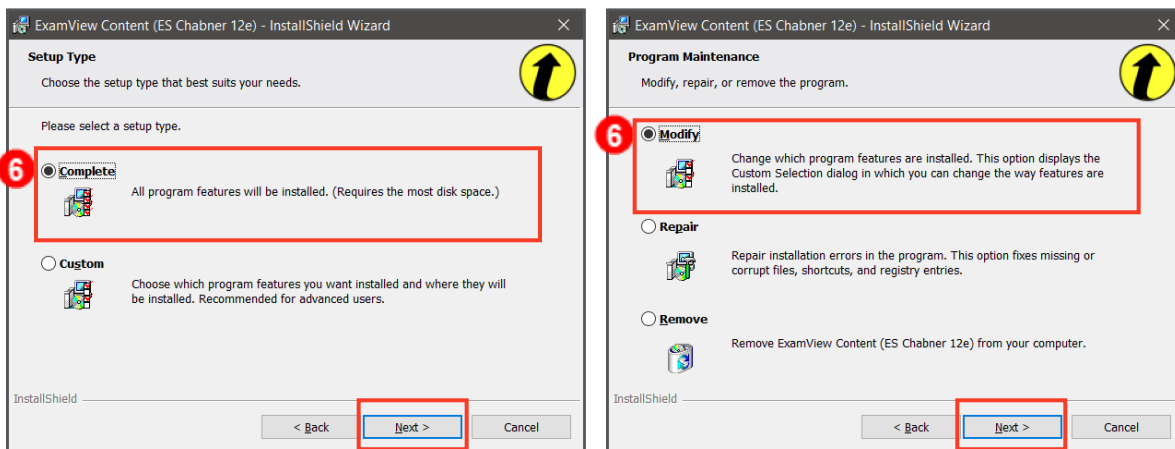
- Once downloaded, **click to open the Zip file** in the browser or in your downloads. This file **will usually be titled with the author's name and the edition number of the book**.



5. Inside the Zip file, you will double-click to run the **Setup.exe** file.



6. The installer will run, setting up ExamView and also downloading the Test Banks. **Follow the prompts to install** the browser and **agree to the terms and conditions**. If this is your first test bank installation, select the **Complete** setup type when prompted. If you have previously installed ExamView, select **Modify**. Click **Next** to continue.



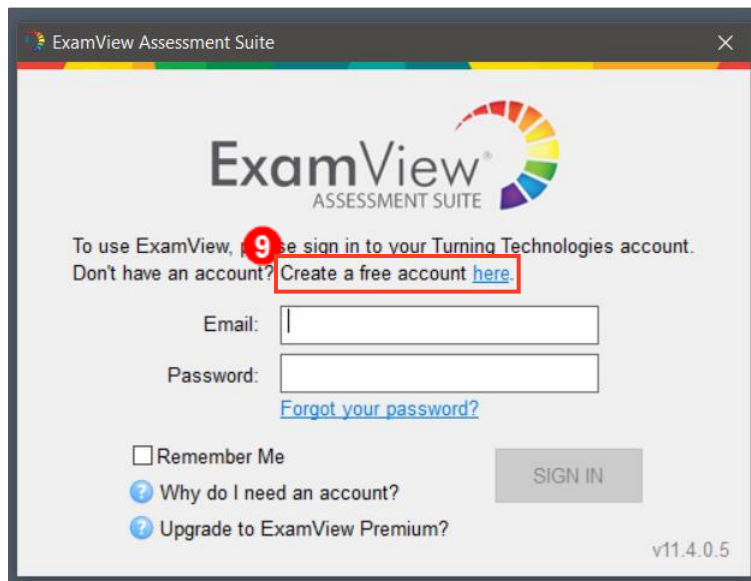
7. Once installation is complete, select **Finish**.



- Once installed, you will see three new icons on your desktop. The **ExamView TestGenerator**, **TestManager**, and **TestPlayer** will be listed. The **TestGenerator** is used to view test banks and create exams which can be printed or uploaded into your Learning Management System.

NOTE: The **TestManager** and **TestPlayer** are used to administer exams to students and are not supported by Elsevier.

- The first time you open the **TestGenerator**, you will be asked to **register for a free account with Turning Technologies**. Click **Create a free account here** to go to their website. After that, you will need to **sign in with your login credentials** each time you used the TestGenerator.



ExamView® is © copyright Turning Technologies, LLC. All rights reserved.

Windows is © copyright Microsoft. All right reserved.

END OF GUIDE

