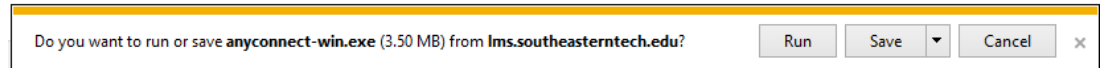
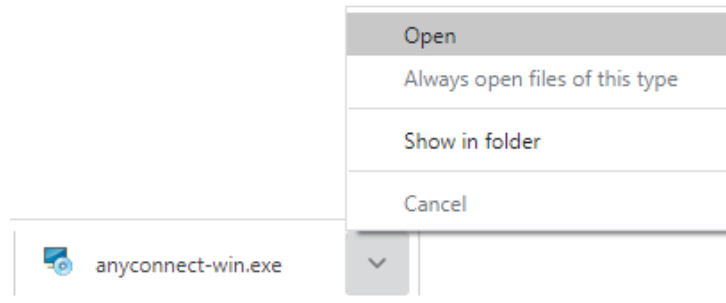


## Installing and Using STC VPN (only supports 250 users at one time)

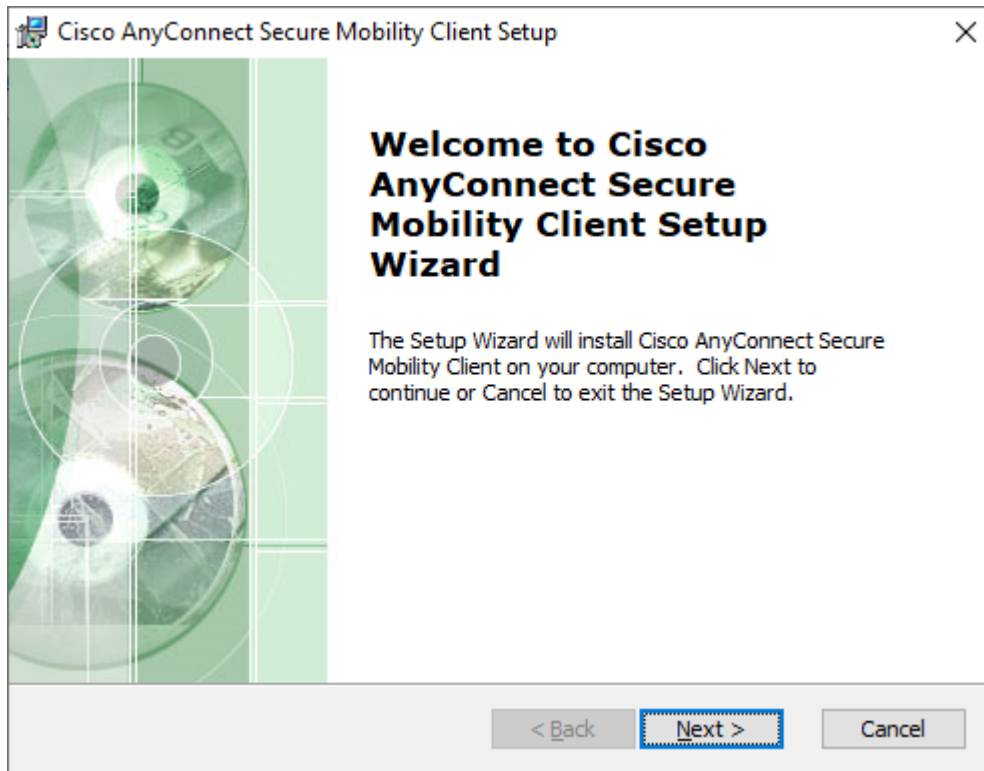
1. Download and install the VPN software by using the following URL
  - a. <http://lms.southeasterntech.edu/it/anyconnect-win.exe>
2. Install the software
  - a. If using IE
    - i. Click Run



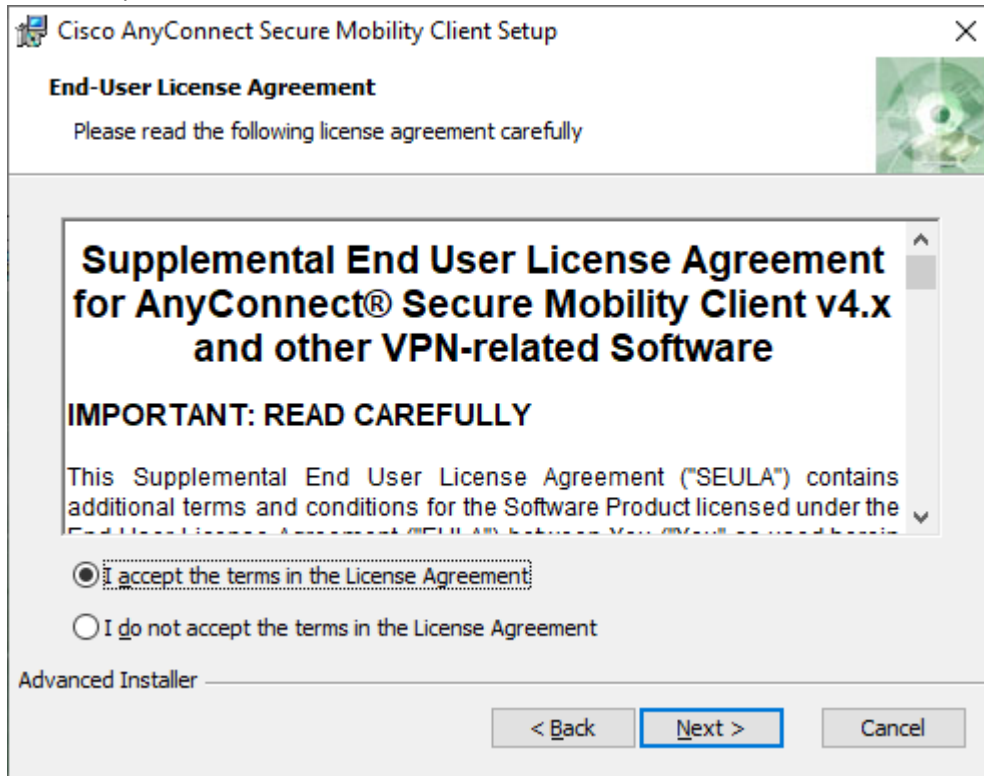
- b. If Chrome
  - i. Click the little arrow beside the downloaded file name and click open from the popup menu.



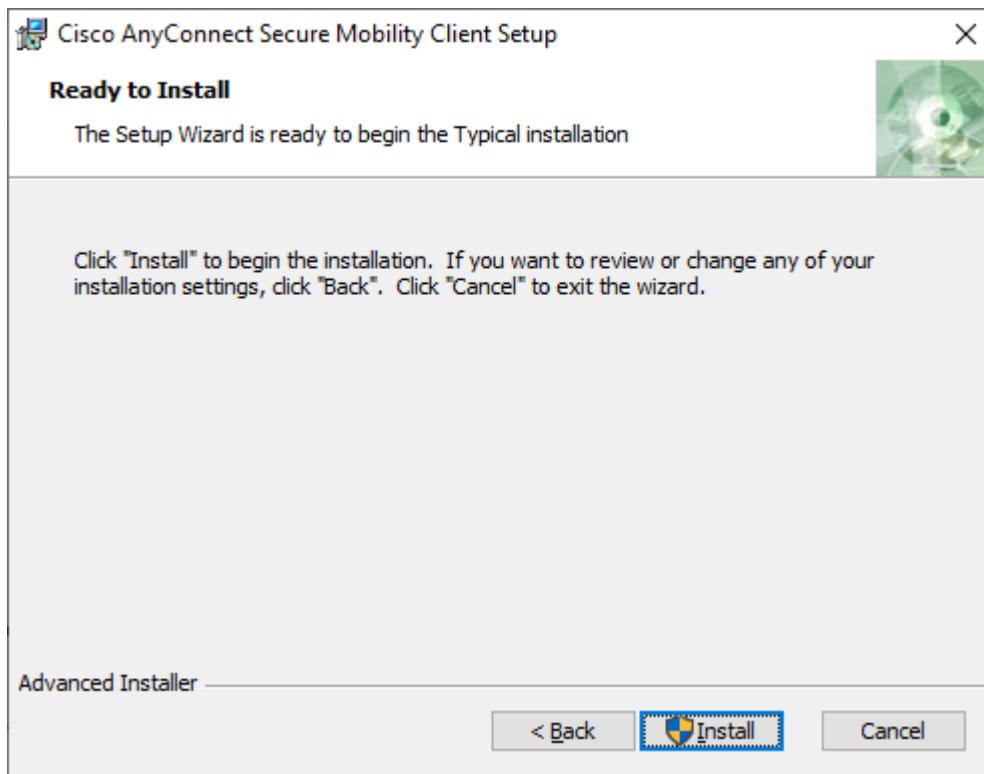
3. On the first screen click next



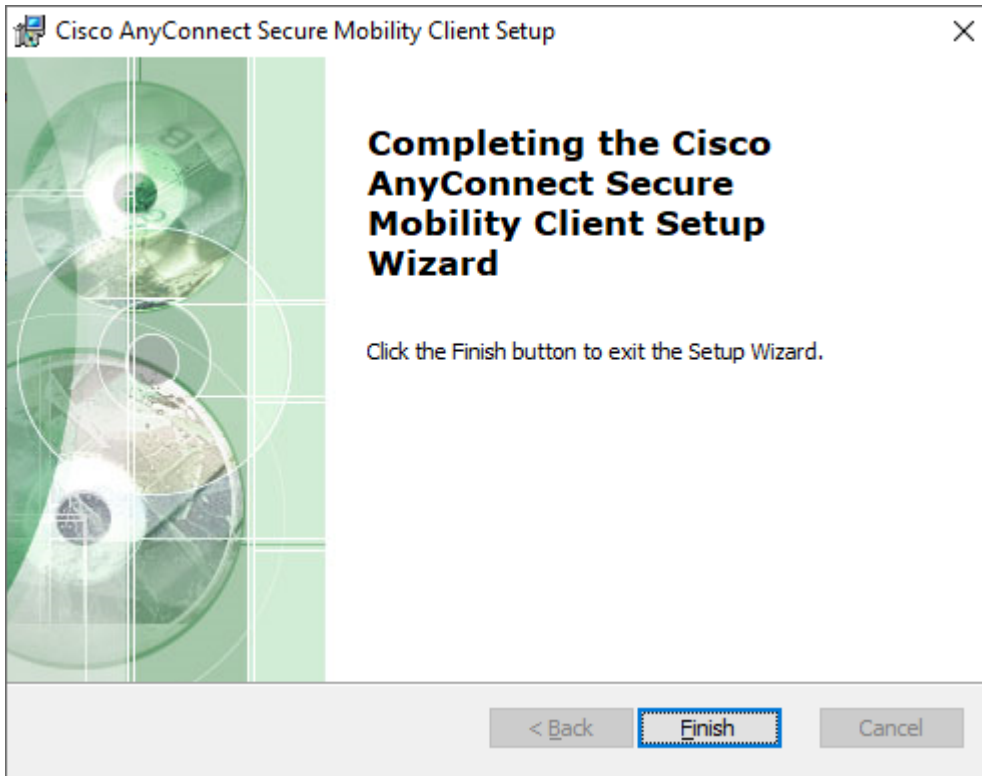
4. Click accept then click next



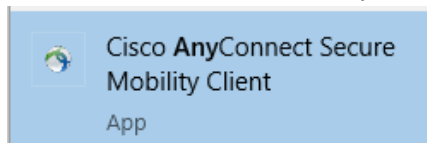
5. Click install



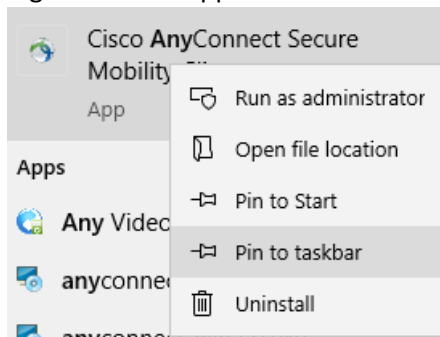
6. Click finish



7. After that you need to pin application to the start bar. In your search box type Anyconnect. According to your version of windows your results may look a bit different than mine. I am on Windows 10
  - a. You should find the "Cisco AnyConnect Secure Mobility Client"



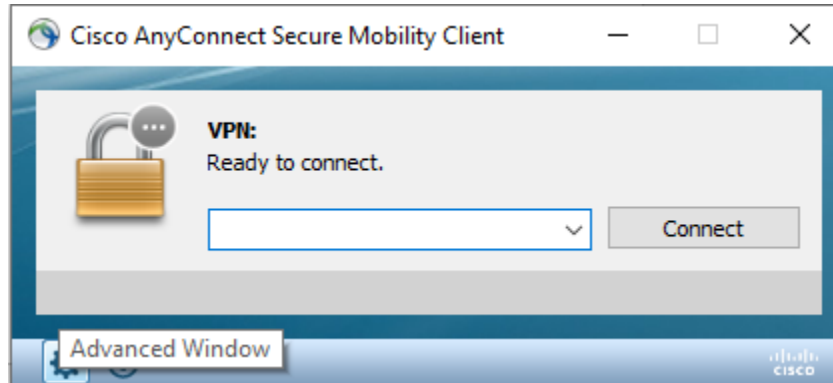
- b. Right Click the Application and select the pin to task bar option



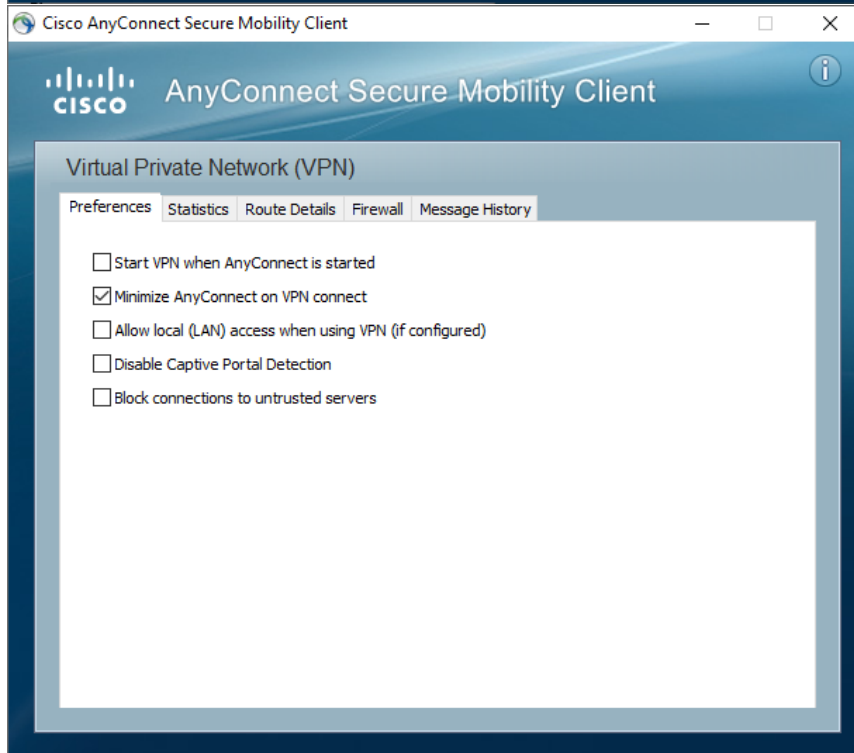
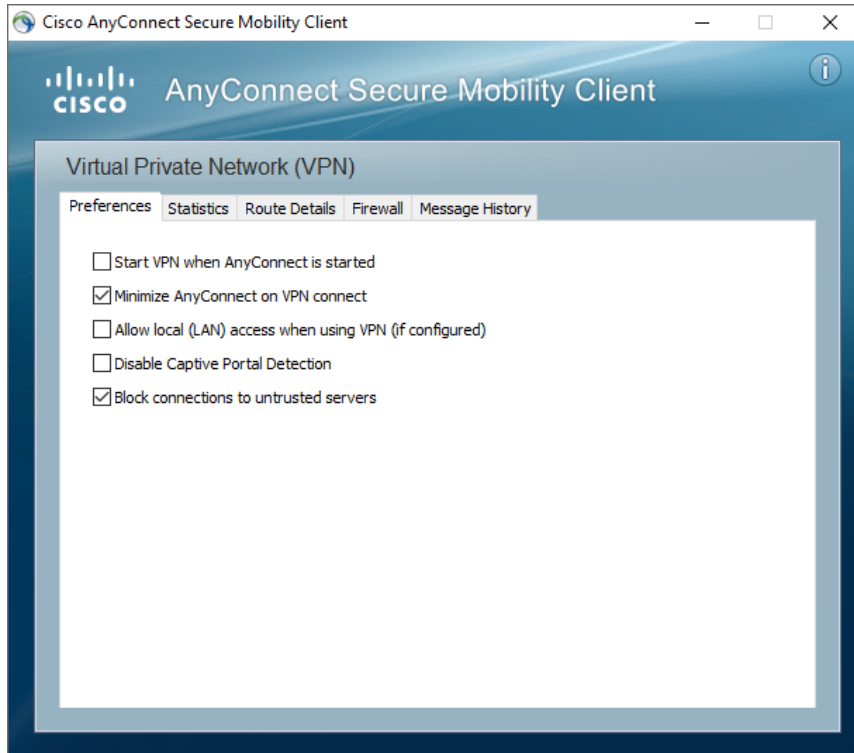
- c. A new task bar icon is created



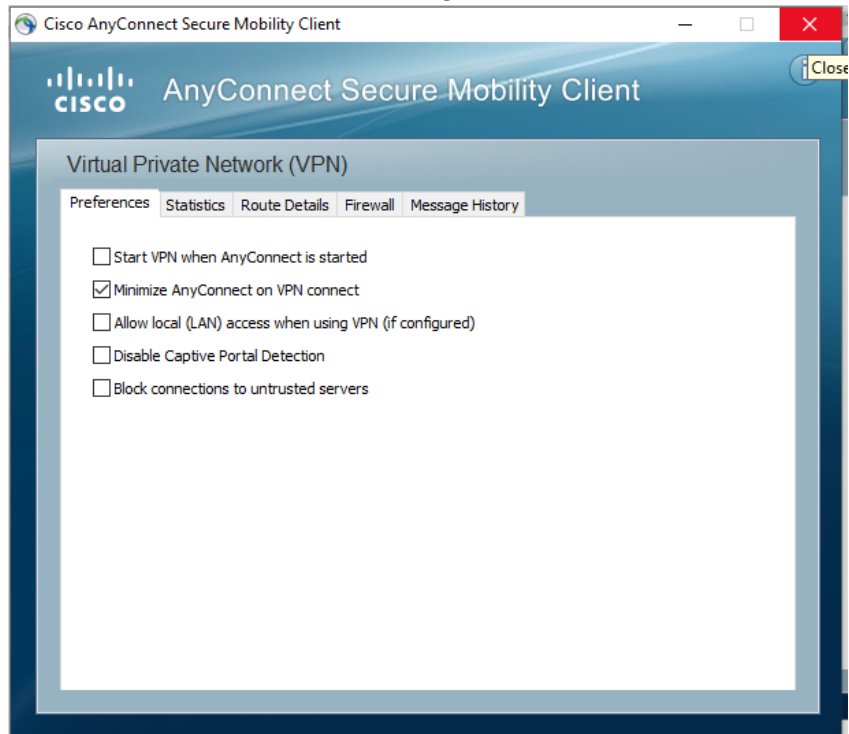
- d. Click this icon to start the VPN connection. We will make one setting change that only has to be done once, so first click the little gear icon in the lower left corner



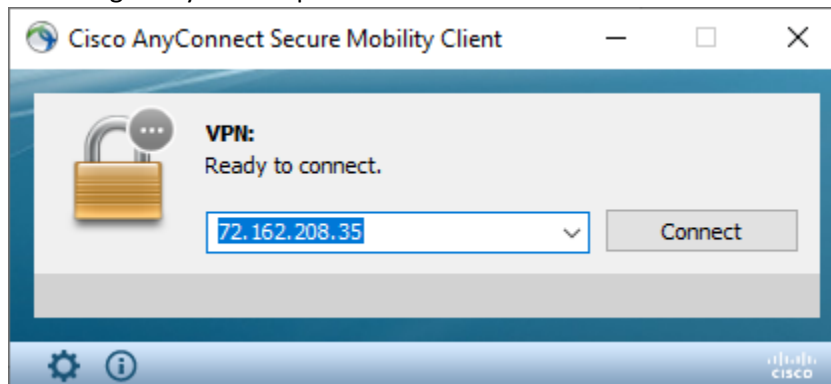
- e. Click on the preferences tab and un-check the block connections to untrusted sites option



- f. Click the red X to exit advance settings



- g. Now click icon again and enter connection details 72.162.208.35 and click connect, When prompted for username and password use your username and password that you use to login to your computer.



- h. Once connected you can then access STC file shares by using the following address in Windows File Explorer Address Bar
- i. S Drive: [\\stc-share-vid\shared\\$](\\stc-share-vid\shared$)
  - ii. P Drive substituting <yourusername> with your username you use to login to your computer.
    1. Vidalia Folks: [\\stc-per-vid\personal\\$\<yourusername>\\$](\\stc-per-vid\personal$\<yourusername>$)
    2. Swainsboro Folks: [\\stc-per-swain\personal\\$\<yourusername>\\$](\\stc-per-swain\personal$\<yourusername>$)
    3. EDC Folks: [\\stc-per-edc\personal\\$\<yourusername>\\$](\\stc-per-edc\personal$\<yourusername>$)
  - iii. L Drive: [\\LMS\www-lms\\$](\\LMS\www-lms$)
  - iv. M Drive: [\\LMS\CourseMaterial\\$](\\LMS\CourseMaterial$)